



Libellen  
Wound Healing Consultants

# Working with Wounds

Building a collaborative approach to healing complex wounds. Don't let wounds get in your way!

# What is my Passion?

My name is **Jennifer Bierhup** *RN WCC  
iNRPA CCM DAPWCA FACCWS*

My passion is healing wounds and  
teaching others how to heal wounds!





# Wound Care Numbers

- **\$28 billion dollars/year spent** on Chronic wounds in the US as a primary diagnosis<sup>9</sup>
- **\$31.7 billion dollars/year spent** of Chronic wounds as a secondary diagnosis<sup>9</sup>
- PI affects 2.5 million People and accounts for 60,000 deaths annually.
- PI costs 25 Billion dollars per year in the US.
- The average cost of treating a PI is between \$20,000-\$ 151,700.

# What are Wounds?

- **Acute Wound:** Traumatic injury
- **Chronic Wound:** A wound that fails to heal for over 4 weeks. Related to comorbidity, infection, etc.

# What are the Wound Types?

Pressure  
injury/ Ulcer

Venous Leg  
Ulcers

Diabetic Foot  
Ulcer

Arterial ulcer

Surgical  
wounds

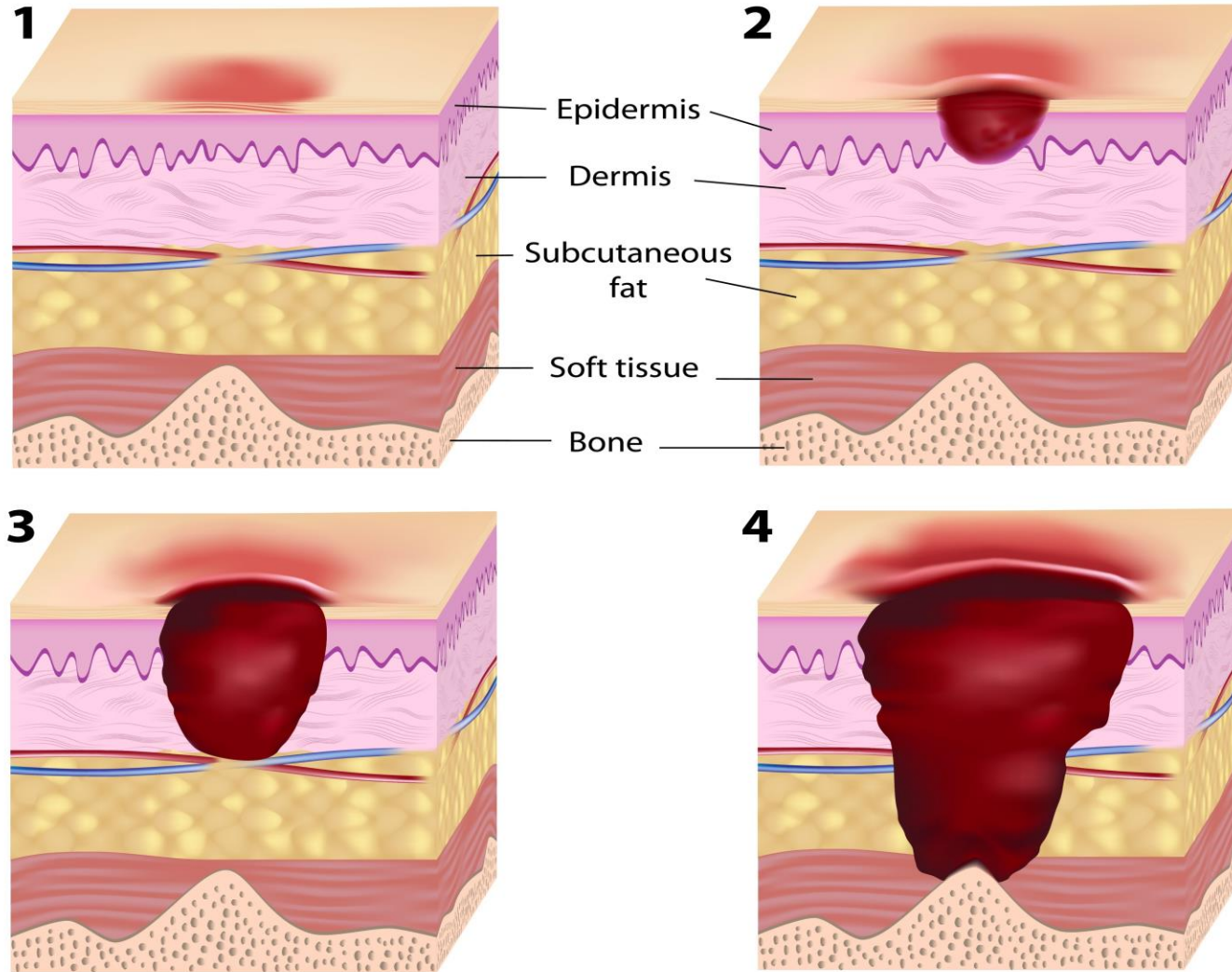
Traumatic  
wounds

Atypical  
wounds

Burns

Moisture  
associated skin  
damage

# Stages of Pressure Sores





# Wound Dressings

- Wound dressings account for only 30% of wound healing outcomes.
- Wound dressings are used for:
  1. Moisture balance- moist wound healing
  2. Bacteria management
  3. Protection from the environment.





# What does it take to heal a wound?

- Blood Flow
- Proper Nutrition
- Wound Hygiene
- Offloading
- Proper Assessment
- Proper Moisture Balance
- Protection From Infection



# Wounds are not Scary!

- Wounds are complex. Wounds are time consuming. Wounds are NOT scary!
- The wrong wound care is very expensive
- Wound care requires a interdisciplinary and holistic approach to achieve lasting healing.
- Correct wound assessment and care planning make all the difference.



# Round whispering It Takes a Village

PT/OT

Skilled nursing

- All
- Dietician
- Diabetes education
- Round care center/ vascular ref
- P... DME: correct dressings, frequency, offloading
- Lympho
- Social work
- Community resources

**Patients are getting more and more complex,  
we either rise to the challenge, or continue to  
stay stuck in our own silos.**

# Wound Care Case Management: SNF/LTC

- **Skilled Nursing/ LTC:** Aggressively treat the wounds you have. Prevent the ones you don't have
  1. Wash your wounds!
  2. Dietician consult for wound healing: Must add multivitamins and protein, Amino acid supplement
  3. Assess aggressively for offloading requirements
  4. Proper nurse/aide training
  5. Wound treatment by Certified staff/NP/MD



# Wound Care Case Management: Assisted Living

Cannot take a pressure injury over a stage 2/  
unstageable

Not EVERY wound is a  
Pressure injury

Skilled nursing care  
from a HH agency does  
not count against your  
40 hrs a week of  
“hands on” care

Wound Care Center  
consult

Skilled Wound Care:  
allow HH to manage  
the complex wound  
care

Continue to  
aggressively manage  
offloading and leg  
compression

# Wound Care Case Management: Skilled Home Health

**Keep the same nurse as much as possible**

**Wound photography: prevent rehospitalizations and infections**

**Assess for nutrition, offloading, leg compression**

**Develop a personal relationship with your patients to overcome noncompliance**

**Proper wound assessment affects: Oasis, reimbursement, treatment modalities, wound healing outcomes**

# The case for a palliative care consult in wound management

- Wounds are a byproduct of complex health issues
- Palliative care can directly address some of these issues which can lead to better wound healing outcomes:
  1. Severe Pain from Chronic illness
  2. Aggressive control of CHF and COPD
  3. PVD
  4. Control of anxiety
  5. Social work assistance- Meals on Wheels, etc

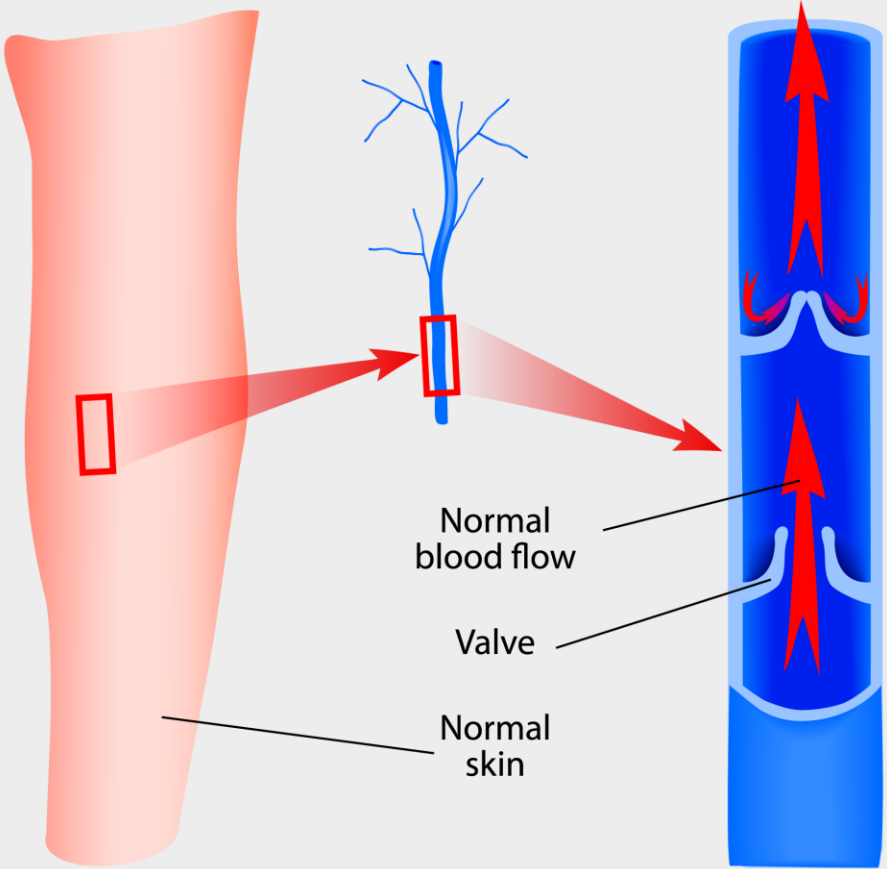


# Barriers to Effective Wound Care

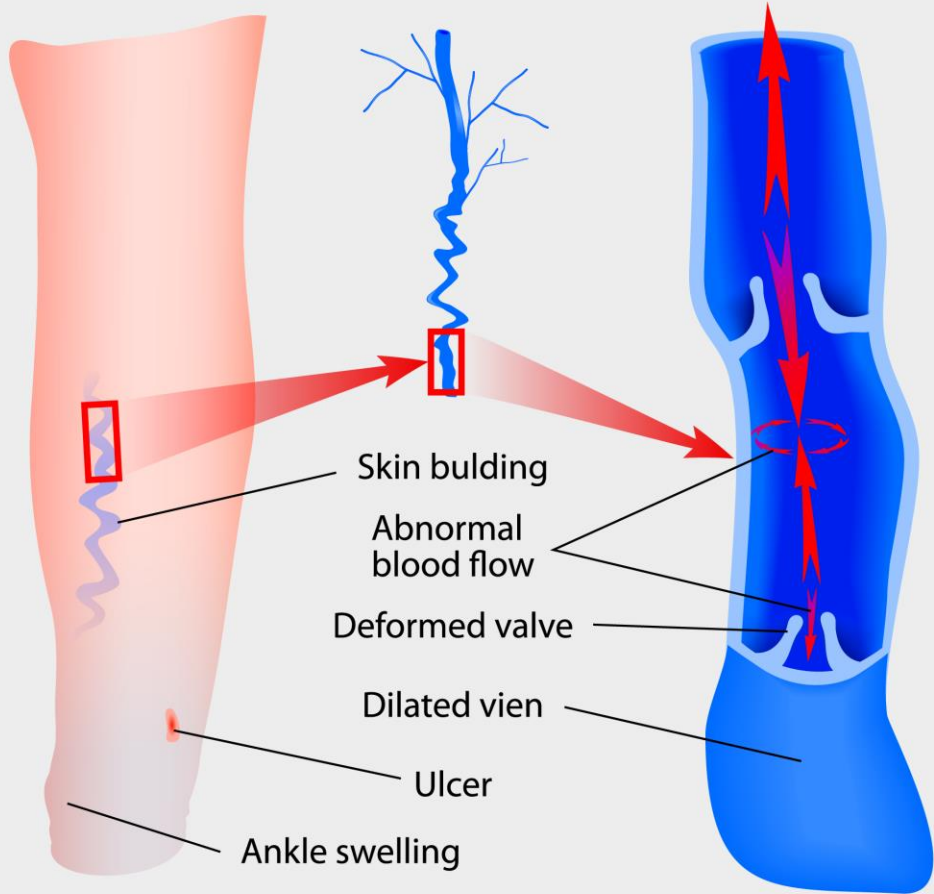
- Inaccurate identification of wounds
- Not addressing the etiology behind the wound
- Co-management of wounds with other providers
- Lack of effective wound training for direct care staff
- Limited amount of certified wound specialists
- Underestimating the social determinants to wound healing

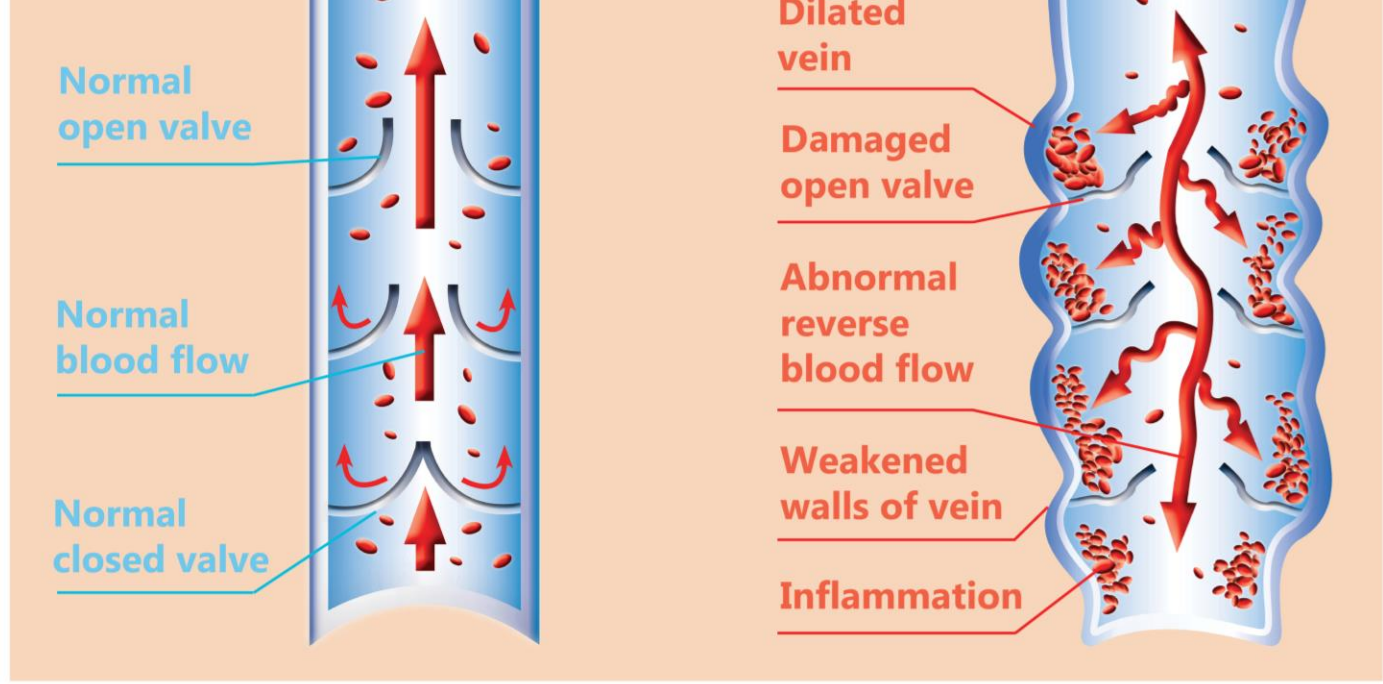
# Spotlight on Venous Stasis Ulcers

## Normal Veins



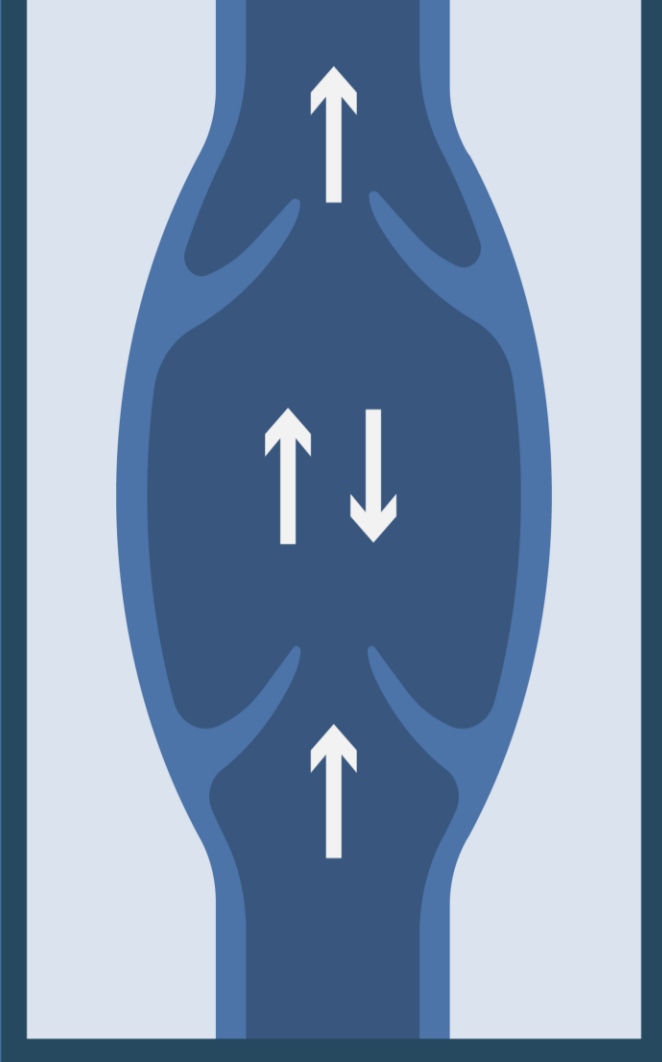
## Venous Insufficiency



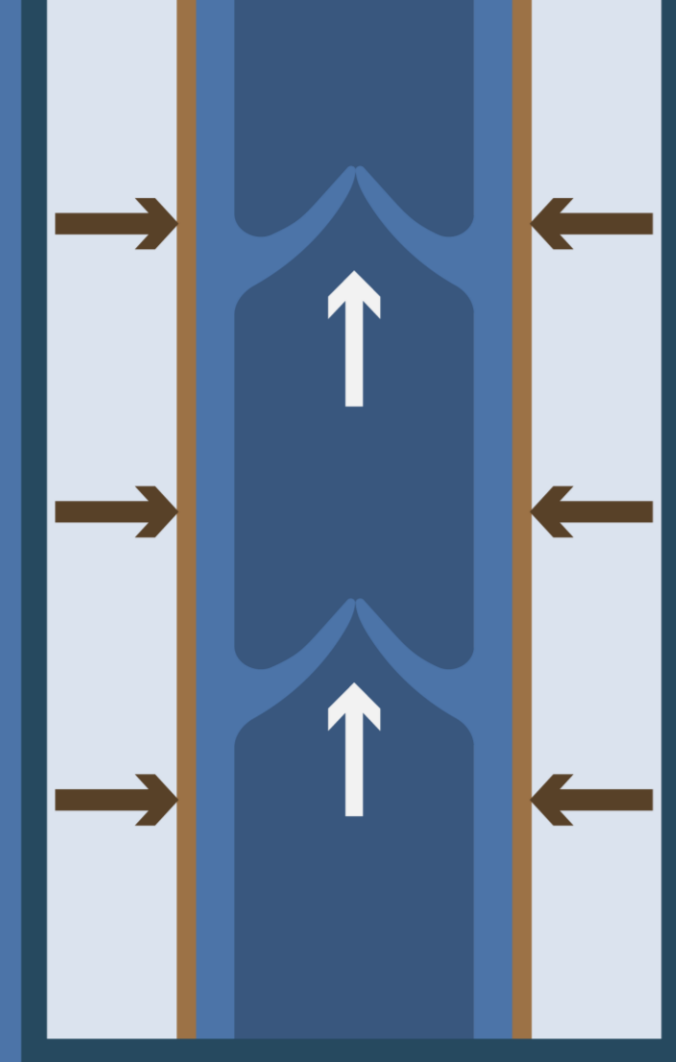
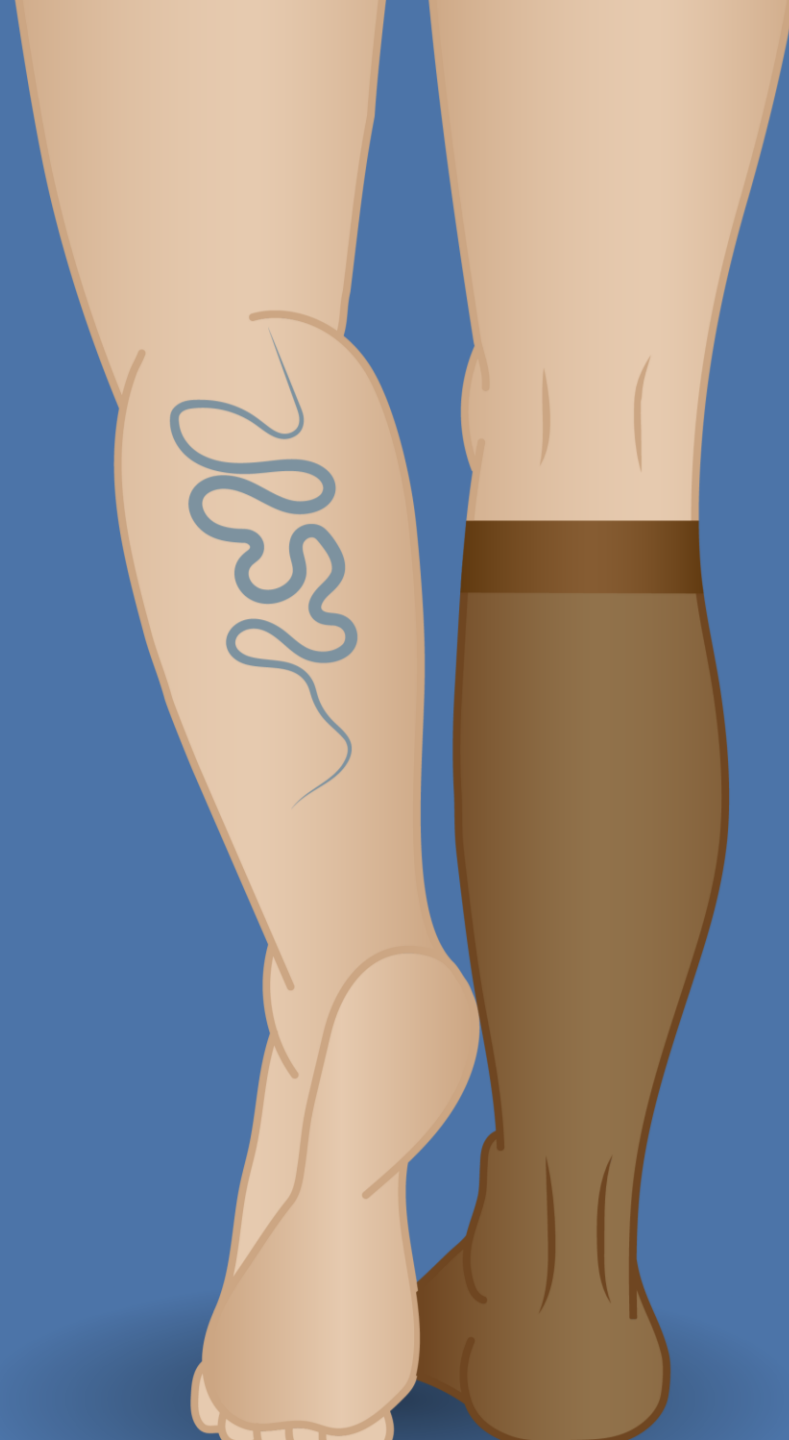








VARICOSE  
VEINS



COMPRESSION  
VEINS

# About Libellen Wound Healing Consultants

- Libellen WHC focuses on Home Health Specific wound care education and wound care consulting.
- Our mission is to empower the Home Health superhero's with the tools and information they require to make a positive difference in wound healing outcomes.
- Wounds can be some of the most expensive episodes you can have in your home health: Libellen aims to help contain those costs through education and proper wound program management.
- Please do not hesitate to call me if you are in a tight spot!
- **THANK YOU SO MUCH!**





